

# Can Seaming & Manufacturing Machine



**MODEL**  
**58P**

Rated Speed up to  
**150 CPM**

Photo May Show Optional Features



- ▶ Revolving 3-Head Rotary Seaming Turret
- ▶ Change Parts for Standard 603 Diameter x 700 High Can Size
- ▶ Free-Standing Stainless Steel Machine Enclosure with Door Interlocks
- ▶ Rotary Cover Marking Attachment
- ▶ Single Roll Cover Separator (Optional)
- ▶ Second Operation Off-Seam Setting
- ▶ 24 Volt DC Controls
- ▶ Automatic Stop Control System
- ▶ No Can/No Cover Feed
- ▶ Mechanical Variable Speed Motor Drive
- ▶ Corrosion Resistant Machine Parts
- ▶ AC Inverter Drive (Optional)
- ▶ Magnetic Downstacker Chute with Vibrator

## Standard Features



Tool Kit & Instruction Manual



Head Spin Machine



Magnetic Downstacker Chute with Vibrator



Under Cover Gassing



Steam Vacuum



Single Roll Cover Separator



Titanium Nitride-Coated Chromium Cobalt Seaming Rolls



Can Manufacturing



Filler Connecting Parts



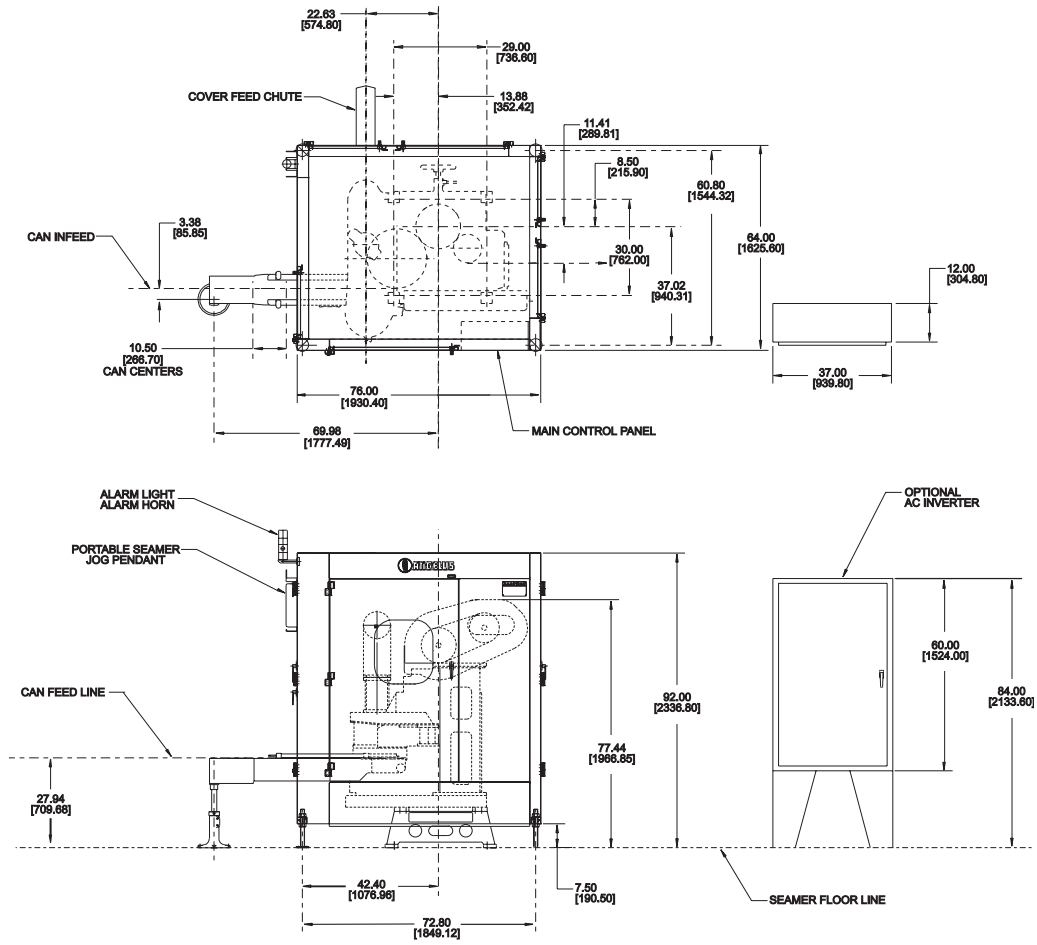
Mechanical Driven Machine Height

## Optional Features

# Technical Specifications

**MODEL**  
**58P**

No. of Seaming Heads	3	Nombre stations sertis.	Anz. Verschlussköpfe	Cabezales de Doble Cierre	3
Output Speed Range	10-150 CPM	Gamme vitesse poss.	Mögl. Geschw. Bereich	Vol. De Producción	10-150 CPM
Min./Max. Can Diameter	501-610	Diam.boîte min./max.	Min./Max. Dosendurchm.	Diámetro Mín./Máx. del Envase	128.6mm-167.4mm
Min./Max. Can Diameter (Optional)	307-701	Diam.boîte min./max. (Option.)	Min./Max. Dosendurchm. (Option.)	Diámetro Mín./Máx. del Envase (Opcional)	87.3mm-179.4mm
Min./Max. Can Height	308-910	Hauteur boîte min./max.	Min./Max. Dosenhöhe	Altura Mín./Máx. del Envase	88.9mm-244.5mm
Min./Max. Can Height (Optional)	108-1109	Hauteur boîte min./max. (Option.)	Min./Max. Dosenhöhe (Option.)	Altura Mín./Máx. del Envase (Opcional)	38.1mm-293.7mm
Min./Max. Can Height (SV & UCG)	308-910	Hauteur boîte min./max. (Inj.gaz CO <sup>2</sup> & vapeur)	Min./Max. Dosenhöhe (UCG. + Bedampf.)	Altura Mín./Máx. del Envase (Can Dispositivo para Gasificación y Vacío al Vapor)	88.9mm-244.5mm
Min./Max. Can Height (SV & UCG) Optional	208-1109	Hauteur boîte min./max. (Inj.gaz CO <sup>2</sup> & vapeur-Option.)	Min./Max. Dosenhöhe (UCG. + Bedampf. - Opt.)	Altura Mín./Máx. del Envase (Can Dispositivo para Gasificación y Vacío al Vapor Opcional)	63.5mm-293.7mm
Transfer Chain Pitch Can Centers	10.500	Pas de chaîne transfert (distance entre boîtes)	Dosentransferketten-Teilung	Centros de la Cadena de Transferencia	266.7 mm
Horsepower/Electrical	3-5 Hp	Kw-Force électr.	Kw-Elektroleistung	Hp/Eléctrica	2-4 Kw
Electrical Controls	24 Volt DC	Commandes électr.	Elektrosteuerung	Control Eléctrico	24 Volt Dc
CO <sup>2</sup> /Nitrogen Gas Supply Pressure	100psi @ 70°F	Pression Amen. Gaz CO <sup>2</sup> ou azote	CO <sup>2</sup> /Stickstoff Gaszufuhrdruck	CO <sup>2</sup> /Suministro de Presión de Gas Nitrogeno	6.9 bars @ 21°C
Steam Supply	330°F @ 85psi	Provision de Vapeur	Dämpfen Sie Versorgung	El Suministro del Vapor	165°C @ 5.9 bars
Net Weight (Approx.)	7,400 lbs	Poids net (Approx.)	Nettogewicht (ca.)	Peso Neto (Aprox.)	3,357 Kg
Gross Weight (Approx.)	8,500 lbs	Poids Brut - (Approx.)	Bruttogewicht (ca.)	Peso Bruto - (Approx.)	3,856 Kg



**ANGELUS SANITARY CAN MACHINE COMPANY**  
 4900 PACIFIC BOULEVARD, LOS ANGELES, CA 90058 (323) 583-2171 FAX: (323) 587-5607  
 WEBSITE: www.angelusmachine.com E-MAIL: angelus@angelusmachine.com

**ANGELUS MACHINE CORPORATION INTERNATIONAL**  
 BELGIUM OFFICE: BELCROWNLAAN 44, B-2100 DEURNE, BELGIUM (32) 3 325.69.20 FAX: (32) 3 325.56.33

UK OFFICE: DE'SALIS DRIVE, HAMPTON LOVETT IND. EST., DROITWICH, WORCS. WR9 0QE, U.K. 44 (0) 1905 779602 FAX: 44 (0) 1905 771882

